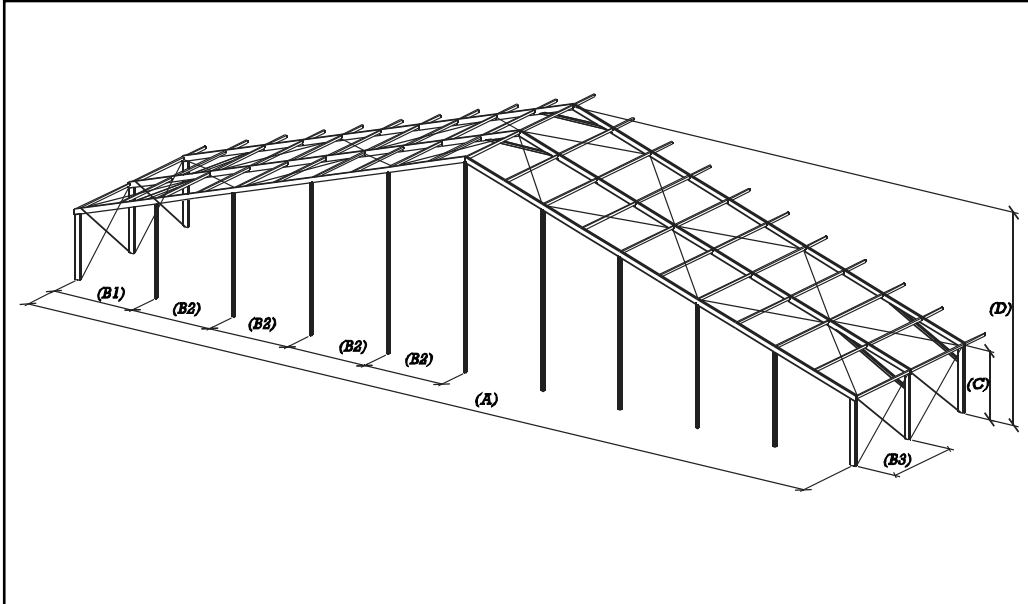


Party and Exhibition Hall

Type: 50,5/400 · Model: 314



Measures/Weights

Width	(A)	50,18	m
Eave height	(C)	3,80	m
Ridge height	(D)	11,95	m
Gable truss	(B1)	5,09	m
Gable truss	(B2)	5,00	m
Distance between trusses	(B3)	5,00	m
Membrane peak			m
Roof slope		18,00	degrees
Longest frame component		10,61	m
Truss profile		300 x 120	mm
Ridge and eave purlin		140 x 100	mm
Intermediate purlin		80 x 80	mm
Frame and PVC-fabrics		8,00	sqm

Technical description

Aluminium Profiles

out of solid, hard pressed
4-groove aluminium hollow profile

Steel parts

hot-dip galvanized according to
DIN 50976,
extremely corrosion-resistant

Ground anchoring

Ground stakes

Load requirements/Technical data

Wind load	0,50	kN/sqm
Wind speed	100,00	m/h
Minimum assembly length	10,00	m
Maximum assembly length	unlimited	
	in 5 m	increments

Losberger Intertent GmbH
Gottlieb-Daimler-Ring 14
D-74906 Bad Rappenau
Tel.: +49(0)7066/980-0 · Fax: 980232
eMail: Losberger@Losberger.com
www.Losberger.com

LOSBERGER